



DAART Quick Start Reference Guide

OPORD 24-03

(OPERATION SAFE ELEPHANT)





What is DAART?

BLUF: DAART is a Secure Web Service Platform for Supporting Domestic Operations (DOMOPS) Mission Command Operations & Incident Awareness & Assessment (IAA)

DAART provides Accredited, Cloud Based (GovCloud), Free for Use Web Services developed and sustained by the National Guard Bureau (NGB) J-2 that enables Joint, Interagency, Intergovernmental and Multinational (JIIM) end users at Federal, State, Local and Tribal levels the means to better execute their unit/organization Domestic Operations (DOMOPS) Business Rules via the integration and Sharing of Information between Geospatial, Mission Command (e.g. Common Situation Picture), Collaboration and Functional Areas & mission sets (e.g. IAA), including use of Bring Your Own Device (BYOD) via organic BYOD browser.



<https://daart.us>

DAART Highlights:

- DAART is Government Owned and has an Authority to Operate (ATO) thru Controlled Unclassified Information (CUI) Levels (New ATO issued Jan 23)
- DAART User access meets Intelligence Oversight (IO) rules and Cyber / Information Assurance (IA) standards

Getting Started w/DAART in Support of OPERATION SAFE ELEPHANT

Once logged into DAART,
go to the Operation Safe
Elephant Event. Click the
Purple Enter Button

Links

Support

DAART Suite 3.1.27

Latest Updates

Request Training/Exercise Info

DAART Support

Bugs/Suggestions/Incidents

Manage Users

Contact Help

DAART Quick Start Guide

DAART Fact Sheet

Documents

Training

Downloads

Other Suite Tools

Admin

DAART

Domestic Operations (DOMOPS)
Awareness and Assessment Response Tool

Event/Incident

RNC 2024 (Operation Safe Elephant) WING ★

Created: 4/7/2024

Views: 257

Owner: john.buckley1

ENTER

DAART Account Registration Guide

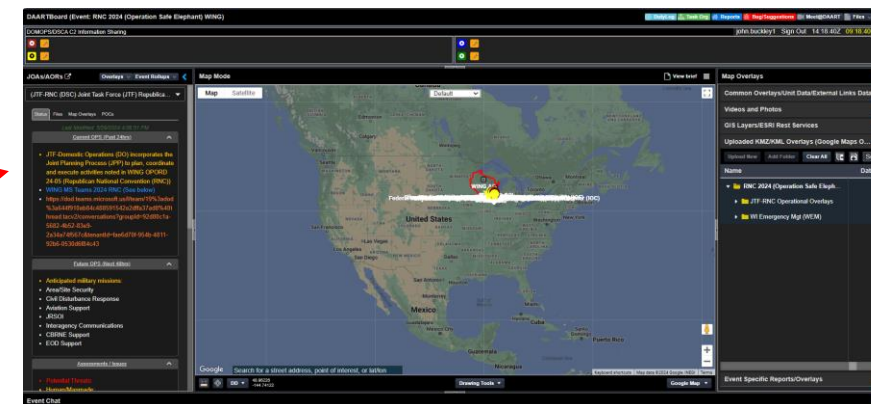
Powered by the U.S. Army Space and Missile Defense Command (SMDC) Space and Missile Defense Center of Excellence (SMDCoE)

Help Desk: 256-955-2750 or DSN: 645-2750

support@daart.us

DAART Web Version 3.1.27

Click on the star so it turns black. This will make
the OPERATION SAFE ELEPHANT your favorite
and will show up as the first event in future log
ins



Once the Enter Button is
clicked, the user will see the
above page open in the
browser. See page 4 to begin
DAART functional operations
from this Event Landing Page.

Basic DAART OPERATION SAFE ELEPHANT Functional Layout

Collaboration: Banners (Page 10)

Mission CMD: Phonebook and Mass Notification System (MNS) (Page 20)

Mission CMD: Duty Logs (Page 12)

Mission CMD: Reports (Page 13-19)

Collaboration: File Sharing (Page 9)

Collaboration: Operational Synch Information (Page 10)

IAA Specific: Pictures/FMV (For Use by J-2 Trained Personnel Only)

GIS: Map Layers including GPS locations, traffic, etc... (Page 7 & 8)

GIS: Support Tools (Page 6)

GIS: Drawing Tools (Page 5)

Collaboration: Chat (Event, Group, Private) (Page 11)

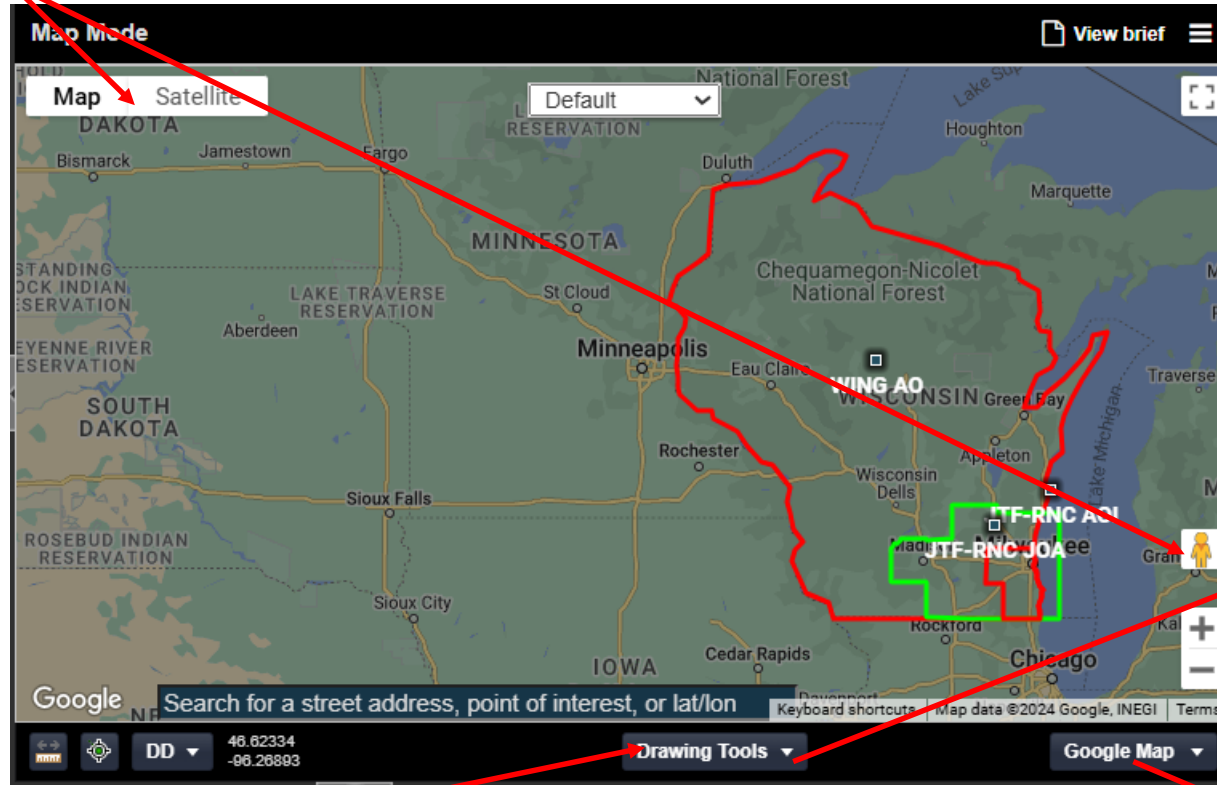
GIS: Map View (Page 5)

Mission CMD: SPOTREP/SIGACT (Page 19)

The screenshot displays the DAARTBoard interface for 'Event: RNC 2024 (Operation Safe Elephant) WING'. The top navigation bar includes links for 'Duty Log', 'Task Org', 'Reports', 'Bug/Suggestions', 'Meet@DAART', and 'Files'. The main content area is divided into several sections: a top banner for 'OPERATION SAFE ELEPHANT', a left sidebar with 'JOAs/AORs' and 'Current OPS (Past 24hrs)', a central map view showing the Great Lakes region with various overlays, and a right sidebar with 'Map Overlays' and 'Event Specific Reports/Overlays'. A chat window is visible at the bottom. Red arrows point from the surrounding text labels to specific features in the interface.

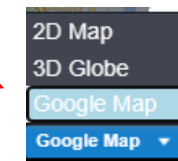
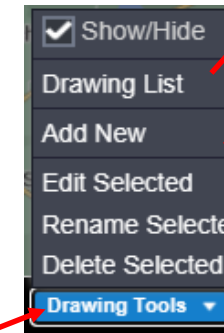
GIS: Drawing Tools/Map View

User can toggle between Map and Satellite view. Satellite view includes Google Street View using yellow man icon.

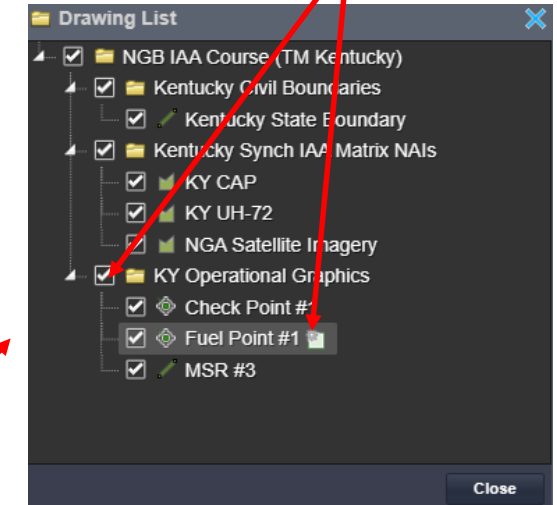


Drawing Tools Tab allows user to Add new drawings to map and make changes, These are shared with everyone in the Event. Used in OPERATION SAFE ELEPHANT for things like AORs, Operational Areas, etc...

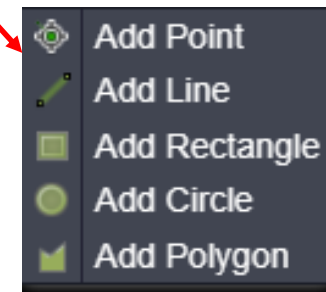
The Options for viewing a DAART Map is 2D Map (e.g. ArcGIS), 3D Globe (e.g. Cesium) and Google Maps. Google Maps is default.



Clicking the icon to the right of a drawing in the list will allow the user to modify and/or add to drawing. Also check on/off to see drawing on map



Note: Once a drawing is saved, it can only be deleted by a Systems Administrator in order to reduce chance of accidental deletion.



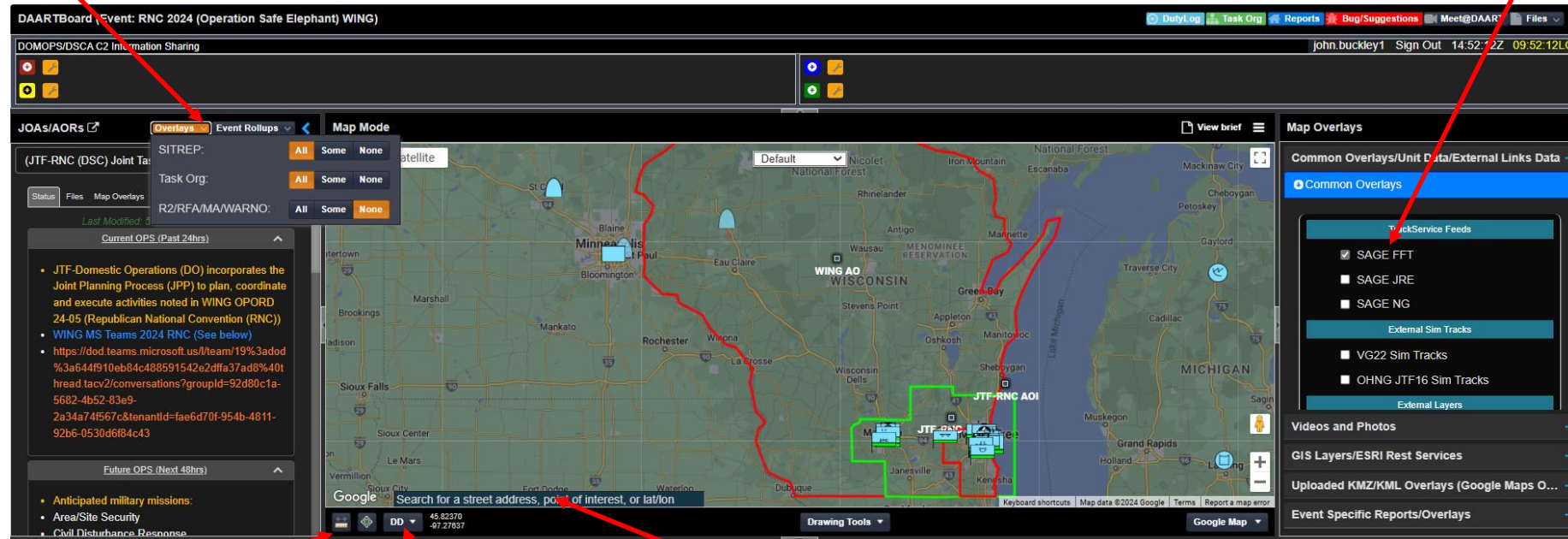
User can Add Point, Line, Rectangle, Circle and Polygon. Once added the drawing will show up in the drawing list and can then be moved into a folder (drag and drop) ⁵

GIS: Support Tools

(Search/Distance/Coordinate/Unit Locations/Real Time Tracks)

Show SITREPs, Unit Locations and Requests For Assistance (RFA) on map

Under Common Overlays Tab, Show Track data from Shouts, NORAD/NORTHCOM SAGE and TAK. Position will update on map. Also weather and Google traffic can be shown if the box is clicked on.



Distance tool can assist user in Point to Point or cumulative distance

Coordinate tool works for DMS, DD and MGRS translation

Search for any address or point/entity and map will move to that location.

GIS: Map Layers (KMZ/KML Google Maps Only)

The screenshot displays the Google Maps interface with a map of Wisconsin. A red outline highlights the state of Wisconsin, and a green outline highlights a specific area in the southern part of the state, labeled 'JTF-RNC AOI'. The map is in 'Map Mode' and 'Map' view. The 'Map Overlays' panel on the right shows a list of overlays, including 'RNC 2024 (Operation Safe Eleph...', 'JTF-RNC Operational Overlays', and 'WI Emergency Mgt (WEM)'. The 'WEM' folder is expanded, showing a list of regions with checkboxes and dates. A red arrow points from the 'box' button in the top right corner of the map to the 'box' button in the 'Map Overlays' panel. Another red arrow points from the 'box' button in the 'Map Overlays' panel to the 'WEM' folder. A third red arrow points from the 'WEM' folder to the 'WEM West Central Region...' entry.

Map Mode

Map Satellite Default

View brief

Map Overlays

Common Overlays/Unit Data/External Links Data +

Videos and Photos +

GIS Layers/ESRI Rest Services +

Uploaded KMZ/KML Overlays (Google Maps O... -

Upload New Add Folder Clear All Search

Name	Date/Tin
▼ RNC 2024 (Operation Safe Eleph...	
▼ JTF-RNC Operational Overlays	
▼ WI Emergency Mgt (WEM)	
✓ WEM East Central Region...	4/8/2024 2
✓ WEM Northeast Region.k	4/8/2024 2
✓ WEM Northwest Region.k	4/8/2024 2
✓ WEM Southeast Region.k	4/8/2024 2
✓ WEM Southwest Region...	4/8/2024 2
✓ WEM West Central Region...	4/8/2024 2

Event Specific Reports/Overlays +

User can make the map full screen by clicking the "box" button.

This tab contains KMZ/KML overlays for OPERATION SAFE ELEPHANT which may be useful in mission planning/execution. To show the overlay on the map click the appropriate box. These are visible only in Google Maps because of KMZ use in addition to KML overlays.

Click the > button to see all the layers available in each folder.

To import a KML or KMZ create a folder for the overlay if one does not already exist. Highlight the folder you want to put the overlay in. Click on Upload GEO Overlay. Browse for KML/KMZ. Open. It is now saved in the folder for everyone to view.

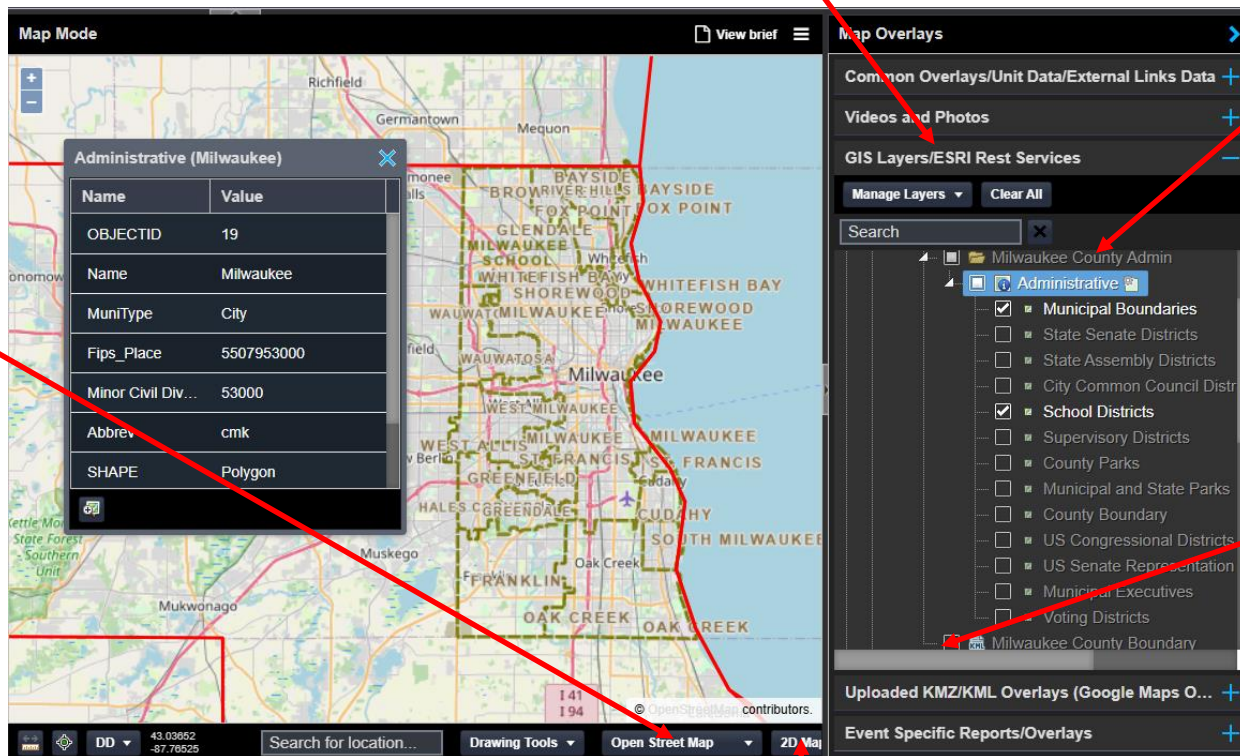
GIS: Map Layers (ArcGIS)

(ESRI/TMS/WMS/KML)

Expand the GIS Layers tab to see the Layer Folders which may be useful for OPERATION SAFE ELEPHANT. All of the folders except for those in the RNC 2024 Geo Layers folder are default to every Event. To save layers for next login or for collaboration click Manage Layers tab. Also there is a Search capability to see if a layer exists in DAART.

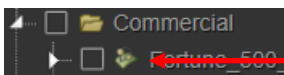
The RNC 2024 Geo Layers contain layers for Milwaukee, WI Emergency Management (WEM) and WI Department of Transportation. Others may be added before the actual event. Click on box to see layer on map.

Different Map Views are available to the user including street maps, topographic and imagery.



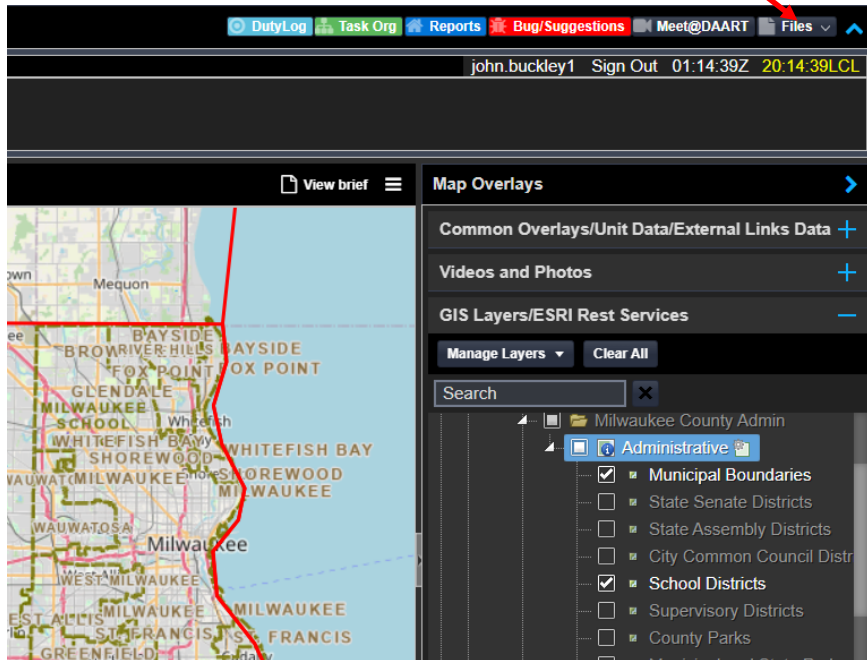
The Homeland Infrastructure Foundation Level Data Folder contains the FEMA critical infrastructure locations for the WING AO and the other 54 States and Territories

//IMPORTANT NOTE// If the layer you want to view on the map has this icon on the layer that means the layer is an ESRI Feature Service and only visible on the 2D map //IMPORTANT NOTE//



Collaboration: File Sharing

OPERATION SAFE
ELEPHANT files can be
stored in the Standard
and/or CUI Files



Expand the Action Button to see all folder contents. To upload a document highlight the folder and click upload file. New sub-folders can also be created by highlighting a folder and clicking on Add Folder

New documents
uploaded will have a
“NEW” icon displayed
for 24 hours. Documents
can be filtered to show
new documents only.

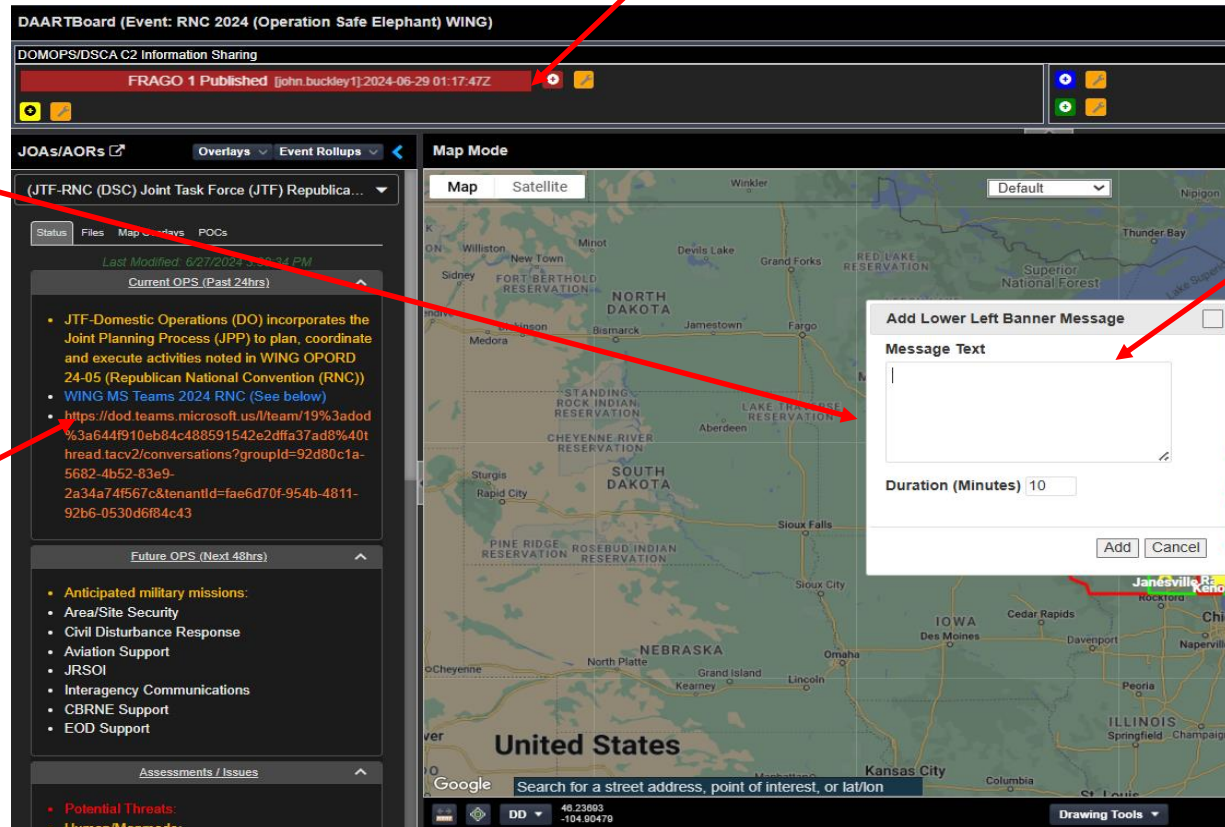
Collaboration: Banners and Operational Synchronization

Collaboration Alert Banners are used to share data in a rapid manner. These banners scroll similar to news banners at the bottom of a TV broadcast. For OPERATION SAFE ELEPHANT Red Banners are reserved for WING JFHQ and JTF-RNC HQ use. The Yellow Banner is reserved for TF use. The Blue Banner is to be used by interagency organizations and LNOs. The Green Banner is for general event information such as Wet Bulb Reading

To create a banner click on the colored cog wheel in the banner area. This will bring up a separate window.

The Operational Synchronization area allows the Command and Staff to share operational focus and direction. This data includes:

- Current Operations (Past 24 hrs)
- Future Operations (Next 48 hrs)
- Assessments/Issues
- CDR/Director Comments

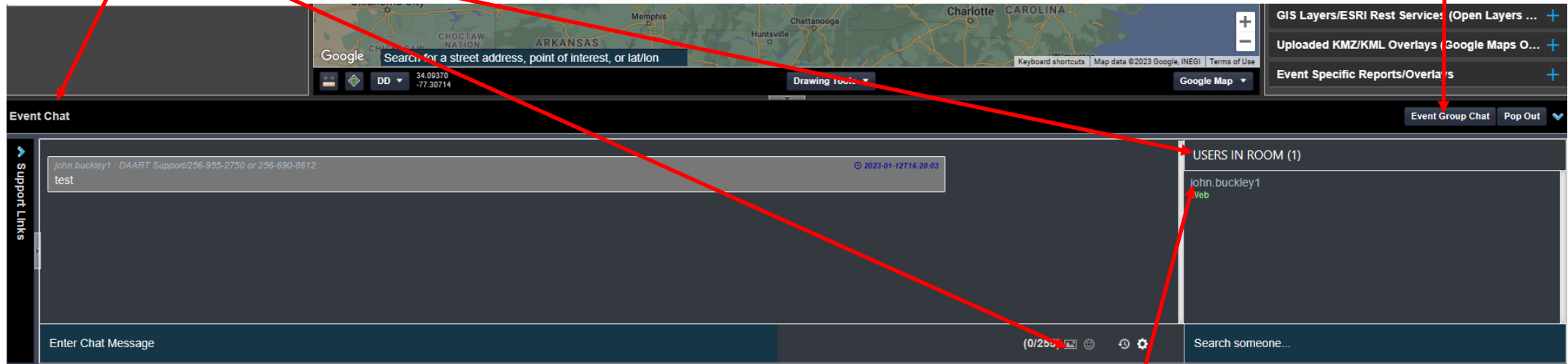


Type in message. Determine how long you want the banner to be displayed. Click Add. Banner will appear to all users logged into DAART, including those using their BYOD.

Collaboration: Chat (Event, Group, Private)

Event Chat can be used as a mean of communication between all users in the event which are shown in USERS IN ROOM. In addition to chat, pictures and emojis can be distributed. All chat is saved and can be shown as chat history. The Event Chat can be popped out for display on another monitor.

A Group Chat Room can be formed by clicking on the Event Group Chat Button. Functions are similar to Event Chat.



To Private Chat with an individual, click on the “balloon” next to the User. That will bring up a separate private chat window. This chat will not be saved and only chat can be exchanged. Multiple Private Chats can be established at one time.

Mission CMD: Duty Logs

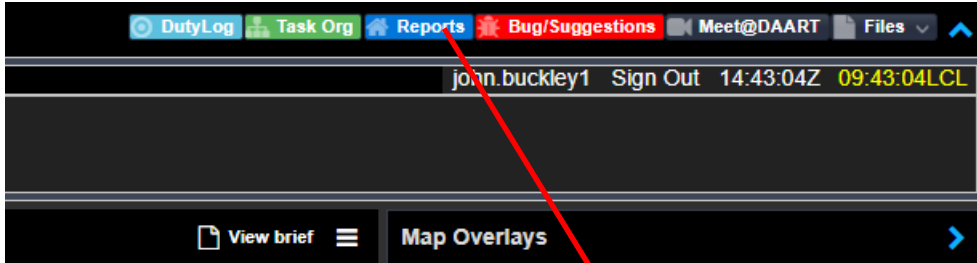
Duty Logs can be created by any organization for any length of time. Once established the Duty Log is filled in per standards described in Army TC 3-22.6

Name	Date/Time Created	Creator	Delete	Rename
JTF-RNC (J-2) 13 July 24	04/30/2024 01:04:44Z	john.buckley1	Delete	Rename
JTF-RNC (J-2) 14 July 24	04/30/2024 01:05:20Z	john.buckley1	Delete	Rename

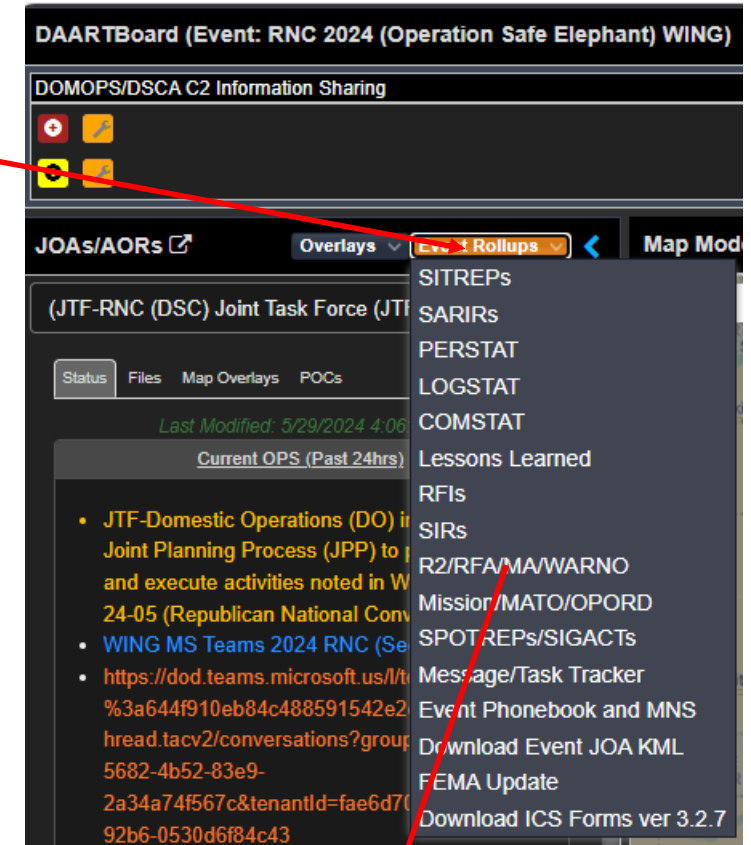
Item No.	Time		Incidents, Messages, Orders, etc.	Action Taken	Initials	SIGACT	Files
	In	Out					
1	(Enter text)	(Enter text)	(Enter text)	(Enter text)	(Enter text)	<input type="checkbox"/>	Upload file(s) pertaining to this entry: Add File

Logs that are SIGACTS can be checked for easy filtering, files can be attached and banners created to bring attention to everyone on the Duty Log content. Anyone viewing the Duty Log will see updates in real time.

Mission CMD: Reports and Report Roll-ups



Each report roll-up will look different, but basically all will have DTG submitted, by whom, status (color if available) and a report overview



All reports are generated in generally the same order. Check which report you want to develop. Create a report. Fill in data from report format. Add files and or location if desired. Click submit button. At this time a banner will be displayed and the report posted into the Event Roll-Ups. All reports can be saved as a PDF or e-mailed direct from the report itself. The primary reports to be used during OPERATION SAFE ELEPHANT are show in pages 14-19 of this guide.

EVENT: RNC 2024 (Operation Safe Elephant) WING R2/RFA/MA/WARNO Rollup

LEGEND FOR R2/RFA/MA/WARNO

Completed	Other	Not Completed	No Status
R	A	C	S

Column visibilityCopyCSVExcelPDFPrintShareFilterReset

Resource Name	DTG	Tracking Number	Requesting Company/Unit/Entity	JDAI/ACR	Go TO	Display On Map
Critical Infrastructure Security (28th St Substation)	Sunday, May 19, 2024 11:29:08 PM	1	Wt Energies (WEC Energy Group)	(Milwaukee WI) Joint Force HQ3 (JFHQ3)	Go To R2, RFA, MA, WARNO	Other
Critical Infrastructure Security (Conwell Substation)	Monday, May 20, 2024 7:30:31 PM	2	Wt Energies (WEC Energy Group)	(Milwaukee WI) Joint Force HQ3 (JFHQ3)	Go To R2, RFA, MA, WARNO	No Status
Critical Infrastructure Security (Everett Substation)	Tuesday, June 4, 2024 5:56:28 PM	3	Wt Energies (WEC Energy Group)	(Milwaukee WI) Joint Force HQ3 (JFHQ3)	Go To R2, RFA, MA, WARNO	Other
Critical Infrastructure Security (Harbor Substation)	Tuesday, June 4, 2024 6:11:30 PM			(Milwaukee WI) Joint Force HQ3 (JFHQ3)	Go To R2, RFA, MA, WARNO	Other
NGRF (Schlitz Park)	Monday, May 20, 2024 7:46:31 PM	18	Milwaukee Police Department (MPD)	(Milwaukee WI) Joint Force HQ3 (JFHQ3)	Go To R2, RFA, MA, WARNO	NOT Complete
NGRF (W. Wisconsin Ave)	Monday, May 20, 2024 7:45:50 PM	19	Milwaukee Police Department (MPD)	(Milwaukee WI) Joint Force HQ3 (JFHQ3)	Go To R2, RFA, MA, WARNO	NOT Complete
Resource Name	DTG	Tracking Number	Requesting Company/Unit/Entity	JDAI/ACR	Go TO	Display On Map

Mission CMD: Reports (SITREP)

Once the SITREP name is created a window will pop up with the mandatory fields that must be filled in for a SITREP. Once this is complete and submitted it will be up a larger SITREP which can be filled in or submitted as is.

Situation Reports (SITREP) - (JTF-RNC (DSC) Joint Task Force (JTF) Republic of the Philippines

CreateReports List by JOA/AOR

sdid

Display On Map

LINE 1:DATE AND TIME:06/27/2024 1942 Z

LINE 2:UNIT (Required):JTF-RNC (DSC)

LINE 3:REFERENCE/COIR #:Provide Reference: Report Title, Originator, and DTG

LINE 4:ORIGINATOR:(Unit Identification Code of the Unit Originating the Report)

LINE 5:REPORTED UNIT:(Unit Identification Code of the Reported Unit)

LINE 6:HOME LOCATION:(City, SC for the Home Location of the Reported Unit)

LINE 7:PRESENT LOCATION:(City, SC for the Present Location of the Reported Unit)

LINE 8:ACTIVITY (Required):fdads

LINE 9:EFFECTIVE:(Brief Description of when it is Effective)

LINE 10:OWN SITUATION DISPOSITION / STATUS:(A Summary Updating Changes to or Not Previously Reported Major Combatant and Support Force Locations; Significant Mission Readiness Degradation on Units; Current Deployments; Proposed Force Designations; Organization or Operational Control (CHOP); and Projected Requirements for Additional Forces)

LINE 11A -- LAT LOCATION(LAT LOCATION)0

LINE 11B -- LON LOCATION(LON LOCATION)0

LINE 12:LAST 24 HOURS SITUATION OVERVIEW (Required):fdfsd

LINE 13:OPERATIONS:(A Brief Overall Assessment of the Situation to Include Circumstances or Conditions Which Increase or Materially Readiness of Forces Assigned or Under Operational Control of the Command or Service)

LINE 14:INTELLIGENCE / RECONNAISSANCE:(Brief Overview of the Situation, Including Operations, Order of Battle, Capabilities, and Threat Changes; Reference: Any Significant Spot Intelligence Reports (SPIREPs) or Intelligence Reports (INTREPs) Submitted in Previous 24 Hours)

LINE 15:LOGISTICS:(Significant Deficiencies Affecting Support for Planned Operations; Problem Areas Beyond the Commanders or Services Capability to Overcome or Alleviate in a Timely Manner)

LINE 16:COMMUNICATIONS / CONNECTIVITY:(Significant Outages, Traffic Volume, Incompatibilities, and Quantitative Equipment Deficiencies; an Assessment of the Mission Impact Caused by Communications Outages and Degradations Should be Provided by the CINCs J-6/J-3 Staff and Contained in This Section)

LINE 17:PERSONNEL:(Factors Affecting Readiness of Forces/Units; Mobilization Status; Daily Battle Casualties Status; Daily Battle Casualties (Ex: KIA, WIA, MIA) Aggregated by Service and Impact of All Casualties Sustained (Battle, Nonbattle, Critical Skills, Key Personnel Upon the Commands Mission Capability))

LINE 18:SIGNIFICANT POLITICAL / MILITARY / DIPLOMATIC EVENTS:(Events Not Reported by OPREP 3 PINNACLE But Which Could Result in US and Local and International Public Reaction; Results/Decisions of Key Allied or Other Foreign Government Meetings; Civil Unrest Indications of Civil Defense Measures Contemplated or Implemented; Large-Scale Military Exercises; Events Emphasizing Interests of Key Segments of the Society)

LINE 19:CDR'S EVAL:(Summary of Key Points From Paragraphs 12 Through 19 Highlighting Areas Requiring JCS and NCA Actions or Decisions; Continuity of Operations (COOP) Implementation Intentions on Execution)

LINE 20:NEXT 24 HOURS ASSESSMENT (Required):sdf

LINE 21:AUTHENTICATION:(Report Authentication)

Add File

Submit ChangesDelete SITREP

MapSatellite

Latitude

Longitude

Get 1 mile from Address

Create SITREP

All fields are required. Once these required fields for the SITREP are submitted, please enter information for the remaining fields on the Edit SITREP form.

Name

UnitJTF-RNC (DSC)

Activity

Last 24 Hours Situation Overview

Next 24 Hours Assessment

CloseSubmit

The SITREP can be put on the map by entering location. If line 18 is filled out it will show as a yellow cell on the event roll ups.

14

Mission CMD: Reports (Lessons Learned)

Create

Reports List by JOA/AOR

t

Report Name	t
Date/Time of Incident:	06/27/2024 1945 Z
Lessons Learned GENERAL INSTRUCTIONS: Provide Issue/Discuss/Recommend	
Issue/Short Title (25 characters or less)	(Enter text)
Sustain/Improve	(Enter text)
Discussion	(Enter text)
Recommendation	(Enter text)
Exercise name/mission area (25 characters or less)	(Enter text)
Contact Info (Name, Org/office, Phone)	(john.buckley1)
Upload file pertaining to Lesson Learned:	<div>Add File</div>
<div>Create Banner</div> <div></div> <div></div>	<div>Delete</div>

There is no save button for the Lesson Learned Report. If the User wants to create a banner they can click the Create Banner button.

Mission CMD: Reports (RFI)

RFI Tracking Reports - (JTF-RNC (DSC) Joint Task Force (JTF) Republican National Convention

Create Reports List by JOA/AOR

Complete/Closed Open No Status In-Progress

Test

RFI Name: Test
DTG Initiated: Thursday, June 27, 2024 7:46:47 PM
Send To Unit: (Enter text)
Requesting Unit: (Enter text)
Requestor Name: Click to Add Text
Requestor Email: Click to Add Text
Requestor Phone: Click to Add Text

RFI Questions

Question 1: Click to Add Text
Question 2: Click to Add Text
Question 3: Click to Add Text
Question 4: Click to Add Text

RFI Response

Answer 1: Click to Add Text
Answer 2: Click to Add Text
Answer 3: Click to Add Text
Answer 4: Click to Add Text

RFI Status

Status (Open/Closed/In-Progress): (Enter text)
Suspense Date: 06/27/2024 1946 Z

Add File

Submit Changes to Report

Submit

Delete Report

Delete Report

Before the submit button is clicked the user first needs to check the status of the RFI (e.g. Open, Closed or in-progress) and the suspense that the RFI needs to be answered.

The more detail the user puts in the RFI usually means a more rapid and complete response.

Mission CMD: Reports (RFA)

R2/RFA/MA/WARN0 - (JTF-RNC (DSC) Joint Task Force (JTF) Republican National Conve

CreateReports List by JOA/AORCompletedNot CompletedOtherNo Status

Test

Export/Display Controls

☒ Display On Map

PrintEmail

Header Information

R2/RFA/MA/WARN0Test

Name

DTGThursday, June 27, 2024 7:50:42 PM

Tracking Number:(Enter text)

Requesting County/Unit/Entity:(Enter text)

Point Of Contact Information

Name:(Enter text)

Phone #:(Enter text)

ESF:(Enter text)

Email:(Enter text)

County/Parish/Entity:(Enter text)

Person who will use this resource

Primary Contact:(Enter text)

Phone/Email

Alt Contact:(Enter text)

Phone/Email

Assignment Details

Priority/Status:(Enter text)

Date/Time Due:(Enter text)

Assigned To:(Enter text)

Request Details

Resource Name:(Enter text)

Detailed Description:(Enter text)

Unit of Measure/Quantity:(Enter text)

Provide a cost estimate:(Enter text)

Status

☒ Completed☐ Not Completed☐ Other

Other Info as needed:(Enter text)

Estimated Resource Cost

Estimated Cost:(Enter text)

R2/RFA/MA/WARN0 Associated Files

Add File

SubmitR2/RFA/MA/WARN0 KML DownloadDelete

No Missions Associated to RFA


Positional Data -- Use Map

LAT:0

LON:0

Map Data -- Select Location (Drag Icon or type Address)

MapSatellite



Address

Get Lat/Long From Address

Drop Pin

Latitude

Longitude

In order to accurately portray the RFA status on the map the status must be marked either complete, not complete or other (Other usually means requested has not be accepted or approved)

In almost all cases the RFAs are developed by the WING JFHQ after receiving requests from the supporting civil agencies via WebEOC, voice or other means.

Mission CMD: Reports (Mission Tracking)

Once the Mission Tracking button is clicked it will bring up a list of all missions in that particular organization, AOR or JOA. Click the mission created to bring up the mission tracking window.

Mission Tracking For - (JTF-RNC (DSC) Joint Task Force (JTF) Republican National Convention (RNC) Dual Status Command (DSC))

Create

Reports List by JSAWR

Completed

Pending

Quoting

Quoted

Not Assigned

Cancelled

Outgoing

No Status

Column visibility

Copy

CSV

Excel

PDF

Print

Web

Search

GMT Status	Account Number	Mission Short Title	TID/TID-0	Mission Description (RTS-NAI at JTF)	FMA/RNC Published (RTS)	Mission Details (V W)	Location	Mission Working (RTS/Comp/Eng)	Mission Complete (RTS/Comp/Eng)	Assigned By
Go to RTD: Mission	Test		TID/TID-0	6/27/2024 7:46:06 PM	6/27/2024 7:46:06 PM		US	6/27/2024 7:46:06 PM	6/27/2024 7:46:06 PM	Assigned By: A
GMT Status	Account Number	Mission Short Title	TID/TID-0	Mission Description (RTS-NAI at JTF)	FMA/RNC Published (RTS)	Mission Details (V W)	Location	Mission Working (RTS/Comp/Eng)	Mission Complete (RTS/NAI Completed)	Assigned By: A

Showing 1 to 1 of 1 entries

Previous

Next

Key elements of the Mission Tracking Form to be filled out for a proper view in event roll-ups include:

- **EMITS Status** (e.g. status of the mission. This is a drop down)
- **Mission Short Title**
- **Mission Details**
- **Assigned To** (this is a drop down with all units in the event available)
- **The RFA that the mission is related to**

Current Status:
Back to List

☒ Display On Map

Export To Excel

Mission Number	JTF/TF/MSE Assigned	Title 10/32/SAD	Estimated/Real Mission Costs
Test	Enter the JTF Assigned		Enter Estimated Costs of Mission

EMITS Status:	Mission Level:	Mission Received (DTG):	Mission Complete (DTG):
Choose an item	Choose an item	06/27/2024 1948 Z	06/27/2024 1948 Z

S/REP:	Mission Short Title/Summary:	DIV ID:	ESF/EMITS Number/Inter Number:	NOTE: All Internal Missions will use the following format (YY - 0000).	Attached to Mission Number:
Choose an item	Enter the Summary of the Mission	Choose an item	Enter EMITS Number/Inter Number		Enter Mission Number Assignment

When:	FRAGORD Published (DTG):	Assigned To:	Mission Type:
Choose an item	06/27/2024 1948 Z	(Enter text)	Choose an item

Mission Details (5 W's):	State (Location):	County:
Enter the purpose of the Mission	<input type="text"/>	<input type="text"/>

Number of Personnel:	Equipment List:	Additional Info:
Enter the number of pax for the mission	Enter the Equipment List Needed	Enter any additional information needed

Unit Tasked Issues/Concerns/Questions:	
Enter any Issues/Comments/Concerns Here	

Service Support:	Command and Signal:	JOC OIC:	J3 OIC:
Enter Service Support Info	Enter the Equipment List Needed	Enter any additional information needed	Enter any additional information needed

On-site POC: <small>(Title + Full Name)</small>	Phone Number:	Street:	City (Location):	State:	Zip:
Enter On-site Info	Enter On-site Info	Enter On-site Info	Enter On-site Info	Enter On-site Info	Enter On-site Info

Address of the Unit's Mission Location: <small>Type in Address to return LAT and LON</small>		LAT:	LON:
<div style="display: flex; align-items: center;"> <div style="flex: 1;"> <div style="position: relative; height: 150px;"> <div style="position: absolute; top: 50%; left: 50%; transform: translate(-50%, -50%);"> </div> </div> </div> <div style="flex: 1; border: 1px solid #ccc; padding: 5px;"> <input type="text"/> </div> <div style="margin-left: 10px;"> <div>Get Lat/Long From Address</div> <div>Drop Pin</div> </div> </div>		0	0

Get Lat/Long From Address

Drop Pin

Upload file pertaining to Mission:

Submit Changes

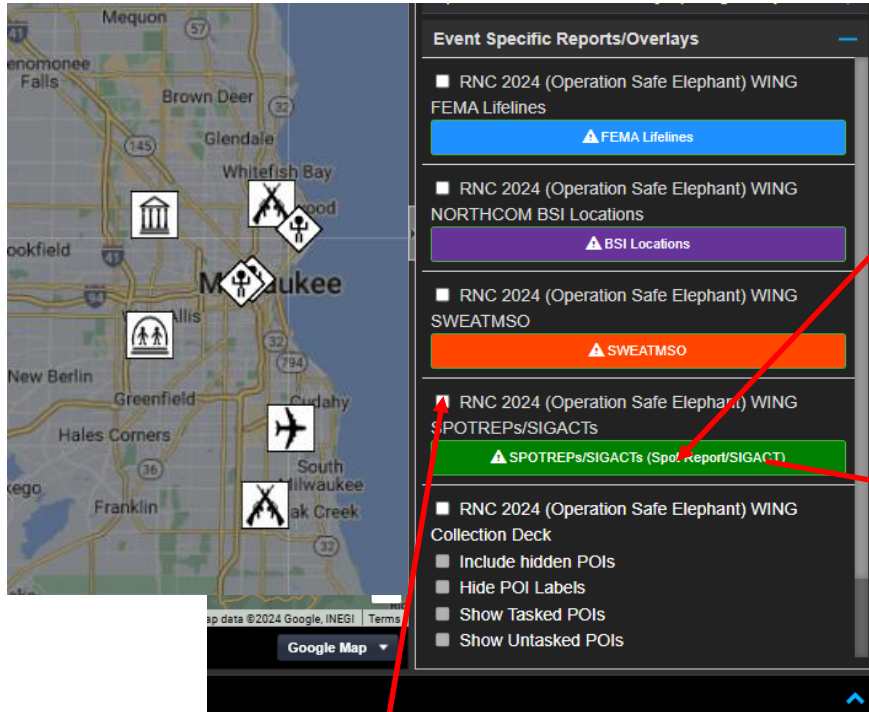
Select RFI

Choose an RFA

Associated RFA

Delete Mission

Mission CMD: SPOTREP/SIGACT



SPOTREPs/SIGACTs will be shown on the map by clicking the SPOTREP/SIGACT box. A roll-up of all of the SPOTREPs/SIGACTs will be found in Event Roll-ups (see page 13)

SPOTREPs/SIGACTs can be created by expanding the Event Specific reports tab and clicking on the Green SPOTREPs/SIGACTs tab. That will bring up a report creation window.

If the user wants the SPOTREP/SIGACT icon to be a standard SIGACT icon (see below) vs. a activity icon, click SIGACT button



Once the SPOTREPs/SIGACTs report is filled in, add the location of the report either via map or type in location. Once complete hit the green submit button. A banner will automatically be generated so all users know a SPOTREP/SIGACT is posted

Mission CMD: Phonebook and Mass Notification System (MNS)

DAARTBoard (Event: RNC 2024 (Operation Safe Elephant) WING)

DOMOPS/DSCA C2 Information Sharing

JOAs/AORs

Overlays

Event Rollups

Map Mode

(JTF-RNC (DSC) Joint Task Force (JTF-RNC))

Status

Files

Map Overlays

POCs

Last Modified: 5/29/2024 4:06 PM

Current OPS (Past 24hrs)

- JTF-Domestic Operations (DO) in Joint Planning Process (JPP) to and execute activities noted in W 24-05 (Republican National Convention)
- WING MS Teams 2024 RNC (See https://dod.teams.microsoft.us/ltb/%3a644f910eb84c488591542e2b8ead.tacv2/conversations?group=5682-4b52-83e9-2a34a74f567c&tenantId=fae6d7092b6-0530d6f84c43)

SITREPs

SARIRs

PERSTAT

LOGSTAT

COMSTAT

Lessons Learned

RFIs

SIRs

R2/RFA/MA/WARNO

Mission/MATO/OPORD

SPOTREPs/SIGACTs

Message/Task Tracker

Event Phonebook and MNS

Download Event JOA KML

FEMA Update

Download ICS Forms ver 3.2.7

The Event Phonebook and MNS tab will display an auto generated phonebook once an individual enters their POC data. They can also opt in to a SMS system wide notification thru their user profile on the main DAART page with all of the events. The event wide MNS can be sent via SMS text or e-mail.

×

Send Event Wide Notification

Select Mode

☐ Email

☐ SMS

✉

Select Recipients! ▾

✎

Subject:

✎

Enter your message here.

Submit

Cancel

EVENT: RNC 2024 (Operation Safe Elephant) WING Phonebook and MNS

Full Name	Title/Rank	Organization	Unit	Last Name	First Name	Telephone	SMS Opted In	Email/OMB	Location	Other	JOA/AOR
Director Scott Faralli	Director	Wisconsin Statewide Intelligence Center (WSIC)	Wisconsin Department of Justice-Division of Criminal Investigation	Faralli	Scott	(608) 242-5393	No	wsic@doj.state.wi.us	17 W. Main Street, P.O. Box 7857, Madison, WI 53707	Fusion Center	State and Local Agencies (WI)
LT Col Andrew "Boot" Hill	Lt Col	NGB J237	NGB J-2	Hill	Andrew "Boot"	360-980-0447	No	andrew.t.hill29.mil@army.mil	Arlington, VA	Branch Chief	Supporting Commands, National and Federal Agencies
LT Steven Stelter	LT	Southeastern WI Threat Analysis Center (STAC)	United States Department of Homeland Security	Stelter	Steven	(414) 935-7741	No	stac@milwaukee.gov	749 W. State Street, Milwaukee, WI 53233	Director	State and Local Agencies (WI)
MAJ Shane Brandl	MAJ	WING	Wisconsin Army National Guard	Brandl	Shane	608-982-6897	No	shane.r.brandl.mil@army.mil	Madison, WI	Director of Security and Intelligence/J2	(Wisconsin (WI) Joint Force HQs (JFHQ))
Mr. John Buckley	Mr.	USASMDC	USASMDC CoE	Buckley	John	256-955-2750	Yes	john.w.buckley.amde.daart@gmail.com	Redstone Arsenal, AL	DAART Instructor	Supporting Commands, National and Federal Agencies
Mrs Dorae Combs	Mrs	SMDC-CE-DGP	SMDC	Combs	Dorae	256-955-2750	Yes	dorae.d.combs.ctr@army.mil	Redstone Arsenal, AL	CoE	Supporting Commands, National and Federal Agencies

Showing 1 to 6 of 6 entries



NGB DAART Team Contact Information

- 24/7 Help Desk: 256-955-2750 or 256-690-8612
- Republican National Convention (RNC) On-Site Support: 256-337-7289
- E-mail Support: support@daart.us
- URL: <https://daart.us>
- X (formerly known as Twitter): @DAART_NGB

